

# Test Report

**Report No.** A2180040662101005

Page 1 of 7

**Applicant** FOSHAN BLUE ROCKET ELECTRONICS CO.,LTD

**Address** NO.45 GUXIN ROAD, CHANCHENG DISTRICT, FOSHAN, GUANGDONG, P.R.C..

**The following sample(s) and sample information was/were submitted and identified by/on the behalf of the client**

Sample Name BR2020FC  
Sample Received Date Apr. 2, 2018  
Testing Period Apr. 2, 2018 to Apr. 4, 2018

**Test Requested** As specified by client, to test Lead(Pb), Cadmium(Cd), Mercury(Hg), Hexavalent Chromium(Cr(VI)), Polybrominated Biphenyls(PBBs), Polybrominated Diphenyl Ethers (PBDEs), Phthalates (DBP, BBP, DEHP, DIBP) in the submitted sample(s).

**Test Method** Please refer to the following page(s).

**Test Result(s)** Please refer to the following page(s).

\*\*\*\*\*

**Conclusion**

Tested Sample	According to directive	Result
Submitted Sample	RoHS Directive 2011/65/EU with amendment (EU) 2015/863	Pass

\*\*\*\*\*

Pass means that the results shown on the report comply with the limits set by RoHS Directive 2011/65/EU with amendment (EU) 2015/863.



Tested by Tao Chen

Reviewed by Guangmei Feng

Approved by Qinghong Wan

Date Apr. 4, 2018

Qinghong Wan  
Technical Manager

No. R186115762

Centre Testing International Group Co.,Ltd. Shunde Branch  
Yongxing Building, Section 2, No.8, East of Rongqi Avenue, Ronggui, Shunde District, Foshan, Guangdong, China

# Test Report

Report No. A2180040662101005

Page 2 of 7

**Test Method**

Test Item(s)	Test Method	Measured Equipment(s)
Lead(Pb)	IEC 62321-5:2013	ICP-OES
Cadmium(Cd)	IEC 62321-5:2013	ICP-OES
Mercury(Hg)	IEC 62321-4:2013+AMD1:2017 CSV	ICP-OES
Hexavalent Chromium(Cr(VI))	IEC 62321-7-2:2017 and/or determination of Total Chromium by IEC 62321-5:2013	UV-Vis/ICP-OES
Polybrominated Biphenyls(PBBs)	IEC 62321-6:2015	GC-MS
Polybrominated Diphenyl Ethers (PBDEs)	IEC 62321-6:2015	GC-MS
Phthalates (DBP, BBP, DEHP, DIBP)	IEC 62321-8:2017	GC-MS

# Test Report

Report No. A2180040662101005

Page 3 of 7

**Test Result(s)**

Tested Item(s)	Result	MDL	Limit
Lead(Pb)	N.D.	2 mg/kg	1000 mg/kg
Cadmium(Cd)	N.D.	2 mg/kg	100 mg/kg
Mercury(Hg)	N.D.	2 mg/kg	1000 mg/kg
Hexavalent Chromium(Cr(VI))	N.D.	8 mg/kg	1000 mg/kg

Tested Item(s)	Result	MDL	Limit
<b>Polybrominated Biphenyls(PBBs)</b>			
Monobromobiphenyl	N.D.	5 mg/kg	1000 mg/kg
Dibromobiphenyl	N.D.	5 mg/kg	
Tribromobiphenyl	N.D.	5 mg/kg	
Tetrabromobiphenyl	N.D.	5 mg/kg	
Pentabromobiphenyl	N.D.	5 mg/kg	
Hexabromobiphenyl	N.D.	5 mg/kg	
Heptabromobiphenyl	N.D.	5 mg/kg	
Octabromobiphenyl	N.D.	5 mg/kg	
Nonabromobiphenyl	N.D.	5 mg/kg	
Decabromobiphenyl	N.D.	5 mg/kg	

Tested Item(s)	Result	MDL	Limit
<b>Polybrominated Diphenyl Ethers (PBDEs)</b>			
Monobromodiphenyl ether	N.D.	5 mg/kg	1000 mg/kg
Dibromodiphenyl ether	N.D.	5 mg/kg	
Tribromodiphenyl ether	N.D.	5 mg/kg	
Tetrabromodiphenyl ether	N.D.	5 mg/kg	
Pentabromodiphenyl ether	N.D.	5 mg/kg	
Hexabromodiphenyl ether	N.D.	5 mg/kg	
Heptabromodiphenyl ether	N.D.	5 mg/kg	
Octabromodiphenyl ether	N.D.	5 mg/kg	
Nonabromodiphenyl ether	N.D.	5 mg/kg	
Decabromodiphenyl ether	N.D.	5 mg/kg	

# Test Report

Report No. A2180040662101005

Page 4 of 7

**Test Result(s)**

Tested Item(s)	Result	MDL	Limit
<b>Phthalates (DBP, BBP, DEHP, DIBP)</b>			
Dibutyl phthalate(DBP) CAS#:84-74-2	N.D.	50 mg/kg	1000 mg/kg
Butyl benzyl phthalate(BBP) CAS#:85-68-7	N.D.	50 mg/kg	1000 mg/kg
Di-(2-ethylhexyl) phthalate(DEHP) CAS#:117-81-7	N.D.	50 mg/kg	1000 mg/kg
Diisobutyl phthalate(DIBP) CAS#:84-69-5	N.D.	50 mg/kg	1000 mg/kg

**Tested Sample/Part Description** LED body(Tested as a whole)

**Remark:**

- The sample(s) had been dissolved totally tested for Lead, Cadmium, Mercury.
- The sample(s) was tested as a whole, because it's impossible to disassemble or separate it by current equipment and technology.
- The result(s) shown on this report may be different from the content of any homogeneous material.
- MDL = Method Detection Limit
- N.D. = Not Detected (<MDL )
- mg/kg = ppm = parts per million
- 1000 mg/kg = 0.1%

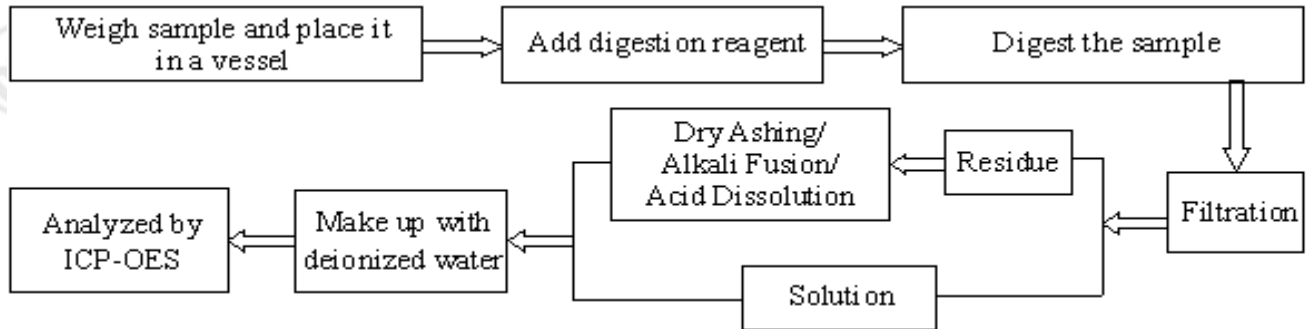
# Test Report

Report No. A2180040662101005

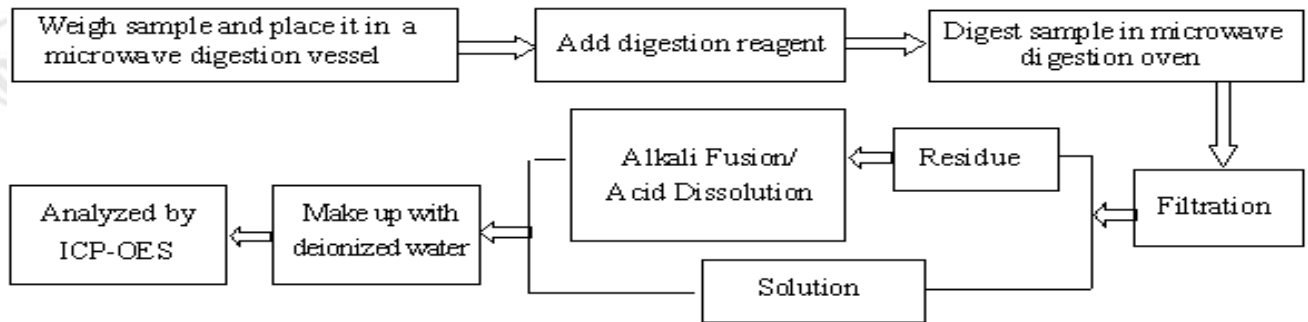
Page 5 of 7

## Test Process

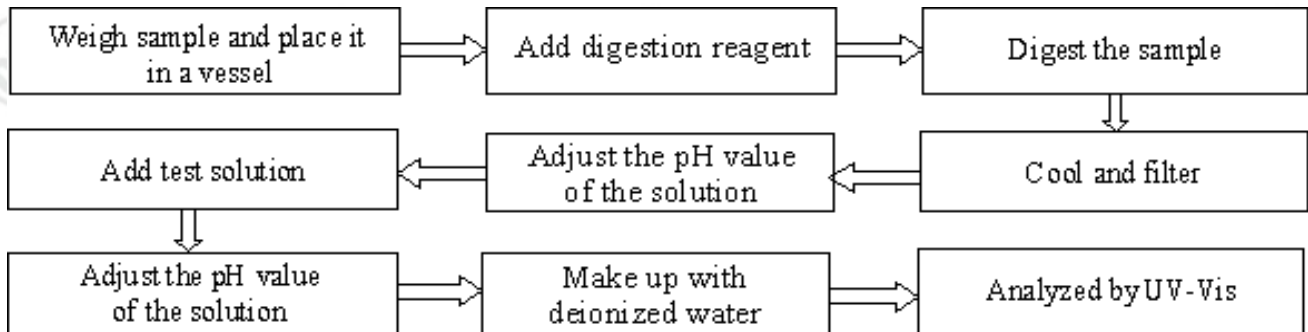
### 1. Lead(Pb), Cadmium(Cd), Chromium(Cr)



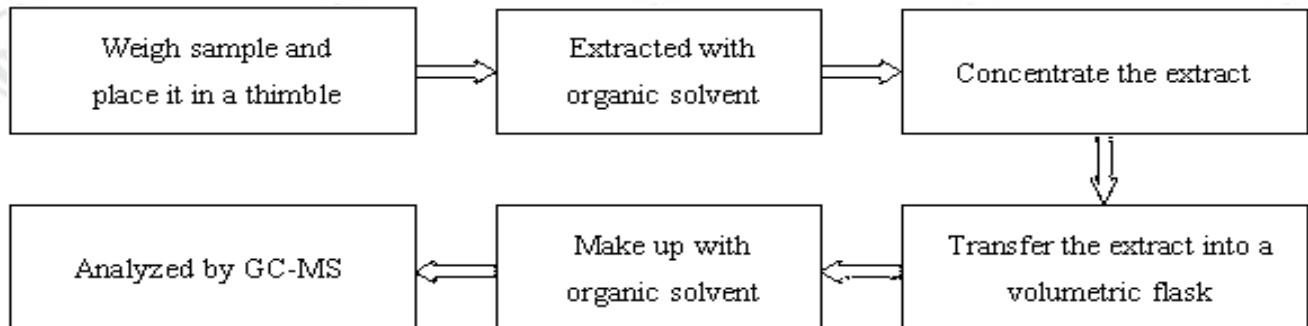
### 2. Mercury(Hg)



### 3. Hexavalent Chromium(Cr(VI))



### 4. Polybrominated Biphenyls(PBBs), Polybrominated Diphenyl Ethers (PBDEs)

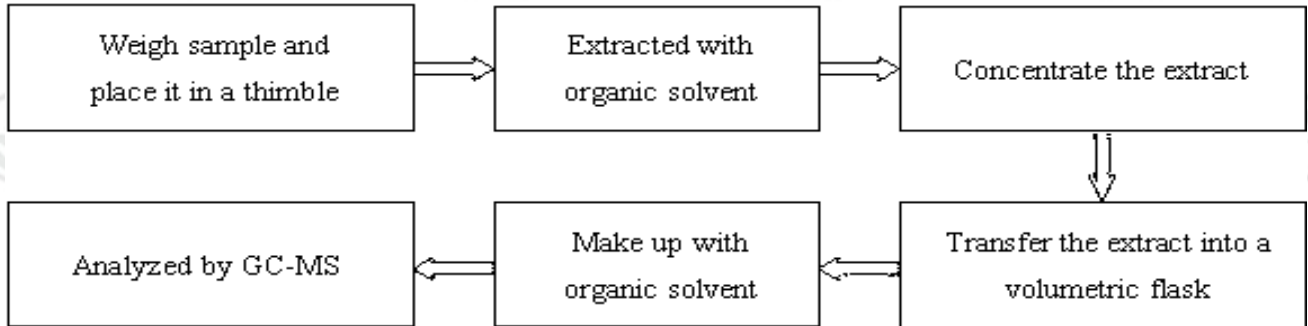


# Test Report

Report No. A2180040662101005

Page 6 of 7

## 5. Phthalates (DBP, BBP, DEHP, DIBP)



# Test Report

Report No. A2180040662101005

Page 7 of 7

## Photo(s) of the sample(s)



\*\*\* End of report \*\*\*

### Statement:

1. This report is considered invalidated without approval signature, special seal and the seal on the perforation;
2. The sample(s) and sample information was/were provided by the client who should be responsible for the authenticity which CTI hasn't verified;
3. The result(s) shown in this report refer(s) only to the sample(s) tested;
4. Without written approval of CTI, this report can't be reproduced except in full;
5. In case of any discrepancy between the English version and Chinese version of the testing reports (if generated), the Chinese version shall prevail.